



Passage Roxtec KFO

Passage étanche à faible surface utile et léger.

Le passage Roxtec KFO dispose d'un cadre composite léger convenant pour les constructions où il est important de garder le poids à un minimum. Le cadre est ouvrable et peut être installé autour de câbles déjà acheminés. Les modules d'étanchéité s'adaptent à des câbles et tuyaux de différentes tailles et peuvent être utilisés dans le passage comme capacité de réserve intégrée.



- Léger
- Surface optimisée
- Idéal pour la rénovation
- Installation facile et rapide
- Accepte des câbles pré-connectés

Caractéristiques du produit



IP/UL NEMA

Structure d'installation



Armoires et coffrets

Classements et certificats

Étanchéité

- IP 66/67

Dimensions du cadre

mm/kg

Les variantes de cadre ci-dessous sont une sélection limitée. Pour voir la gamme complète de cadres et de configurations, veuillez visiter [roxtec.com](https://www.roxtec.com).

Titre	Ouvertures de cadre	Espace de remplissage	Dimensions externes WxHxD	Dimensions d'ouverture w x h	Poids	N° art.
KFO 6x1	1	120 x 180	159 x 260 x 52	123(+0.5/-0.5) x 223(+0.5/-0.5)	1	KFO0000060059
KFO 6x1 WITH FLANGE	1	120 x 180	319 x 420 x 59	170(+2/-2) x 270(+2/-2)	1.6	KFO1000060059



Eléments d'étanchéité

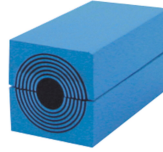
Eléments d'étanchéité



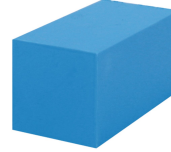
Lubrifiant Roxtec



Wedge et Wedgekit



Module RM avec Multidiameter™



Module de compensation plein RM



Plaque de maintien Roxtec



Kit d'étanchéité Roxtec

Pour plus d'informations, veuillez consulter [roxtec.com](https://www.roxtec.com).

The product information provided by Roxtec does not release the purchaser of the Roxtec system, or part thereof, from the obligation to independently determine the suitability of the products for the intended process, installation and/or use.

Roxtec gives no guarantee for the Roxtec system or any part thereof and assumes no liability for any loss or damage whatsoever, whether direct, indirect, consequential, loss of profit or otherwise, occurred or caused by the Roxtec systems or installations containing components not manufactured by an authorized manufacturer and/or occurred or caused by the use of the Roxtec system in a manner or for an application other than for which the Roxtec system was designed or intended.

Roxtec expressly excludes any implied warranties of merchantability and fitness for a particular purpose and all other express or implied representations and warranties provided by statute or common law. User determines suitability of the Roxtec system for intended use and assumes all risk and liability in connection therewith. In no event shall Roxtec be liable for indirect, consequential, punitive, special, exemplary or incidental damages or losses.

The Roxtec products are offered and sold in accordance with the conditions of the Roxtec General Terms of Sales. The latest version of the Roxtec General Terms of Sales can be downloaded from <https://www.roxtec.com/en/about-us/about-roxtec/general-terms-of-sales/>

We reserve the right to make changes to the product and technical information without further notice. Any errors in print or entry are no claims for indemnity. The content of this publication is the property of Roxtec International AB and is protected by copyright.

This document was generated on: 2024-04-12